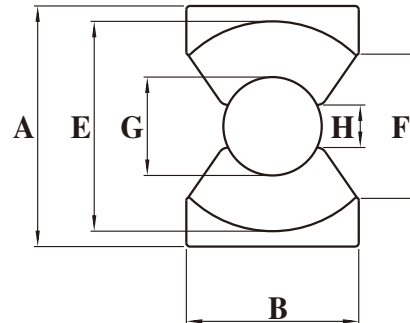
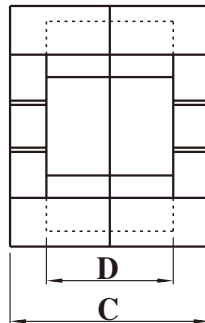


**Dimension: (UNIT:mm)**

A	51.0 ± 0.7
B	32.0 ± 0.6
C	50.0 ± 0.5
D	36.1 ± 0.6
E	44.0 ± 0.7
F	32Min
G	20.0 ± 0.35
H	8.15Min

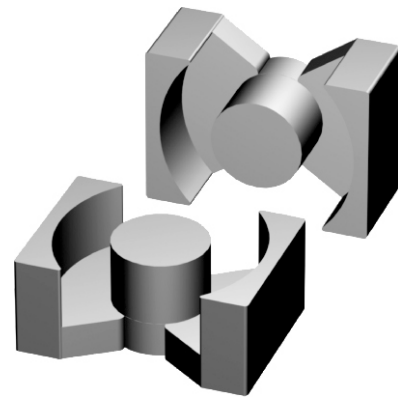


**Test conditions**

AL: F=10.0KHz U=0.3V N=10Ts

**Effective parameter**

C1(mm) <sup>-1</sup>	Ae(mm <sup>2</sup> )	Le(mm)	Ve(mm <sup>3</sup> )	Weight(g)
0.345	328	113	37100	≈195



Core sets for general purpose transformers and Power applications.

Clamping force for Al measurements,80+/-20N.

**Properties of core sets under power conditions**

Grade	AL (nH)	μe	AIR GAP μm	Type number
P4	7400 ± 25%	≈2030	≈0	PQ5050-P4
HQ2KA	6300 ± 25%	≈1730	≈0	PQ5050-HQ2KA

Grade	B (mT) at		Core loss (w) at	
	H=250 A/m F=10KHz T=100℃	f=100 KHz B=100mT T=100℃	F=100 KHz B=200mT T=100℃	F=500 KHz B=50mT T=100℃
P4	≥320	≤3.8	≤23	-
HQ2KA	≥340	≤2.9	≤8	≤14

**Note:**

- 1: Document is the property of FUAN Inc & is not allow to be duplicated without authorization
- 2: RoHS compliant.